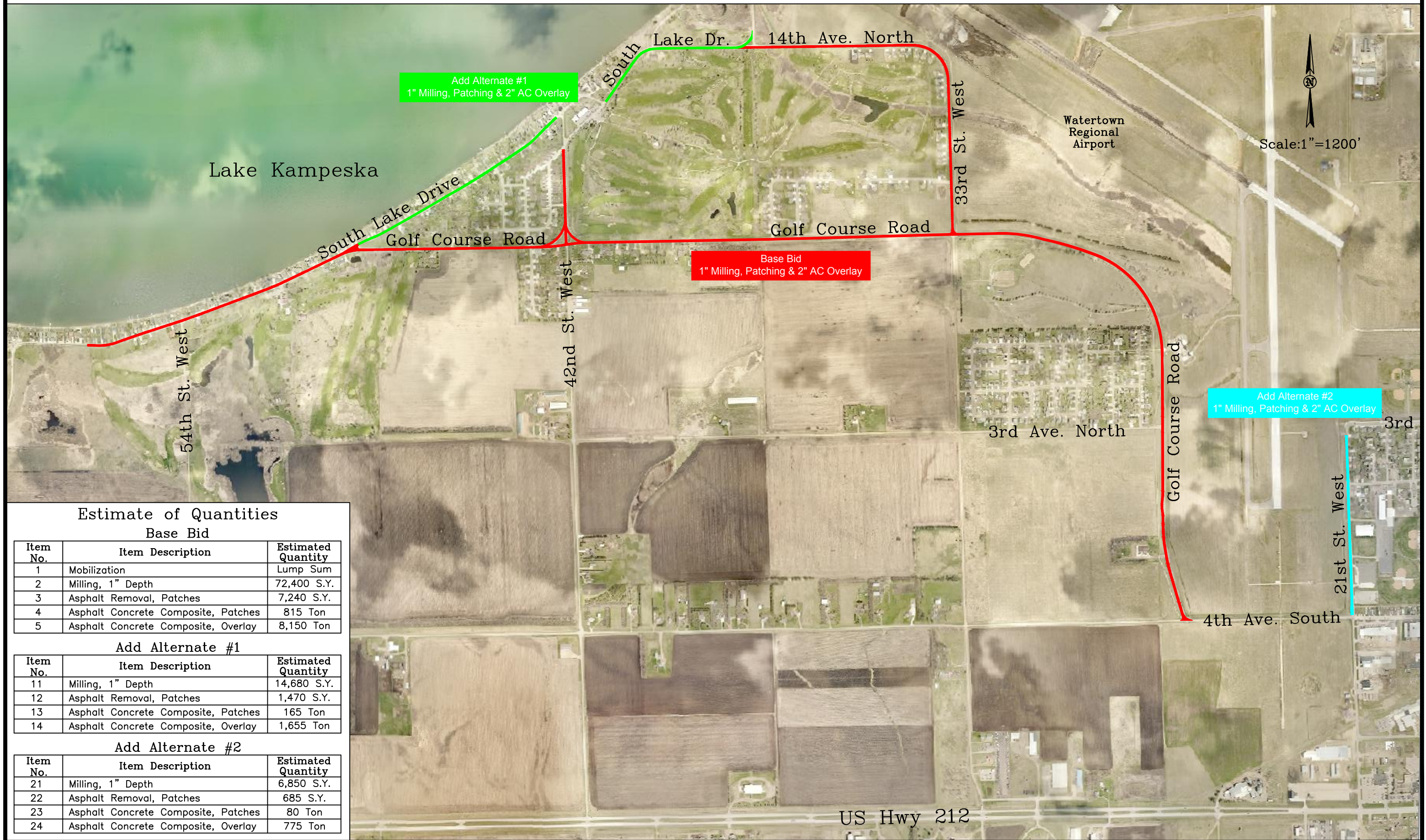


# 2018 Milling & AC Mat Construction



## Estimate of Quantities Base Bid

Item No.	Item Description	Estimated Quantity
1	Mobilization	Lump Sum
2	Milling, 1" Depth	72,400 S.Y.
3	Asphalt Removal, Patches	7,240 S.Y.
4	Asphalt Concrete Composite, Patches	815 Ton
5	Asphalt Concrete Composite, Overlay	8,150 Ton

## Add Alternate #1

Item No.	Item Description	Estimated Quantity
11	Milling, 1" Depth	14,680 S.Y.
12	Asphalt Removal, Patches	1,470 S.Y.
13	Asphalt Concrete Composite, Patches	165 Ton
14	Asphalt Concrete Composite, Overlay	1,655 Ton

## Add Alternate #2

Item No.	Item Description	Estimated Quantity
21	Milling, 1" Depth	6,850 S.Y.
22	Asphalt Removal, Patches	685 S.Y.
23	Asphalt Concrete Composite, Patches	80 Ton
24	Asphalt Concrete Composite, Overlay	775 Ton